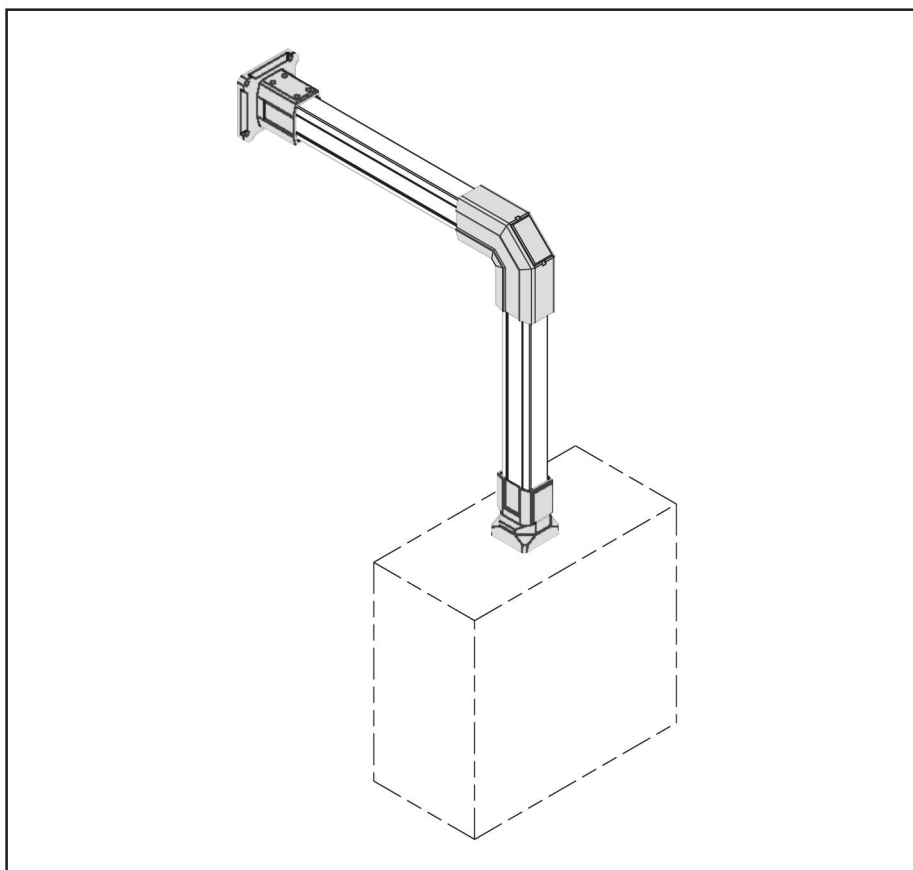




HOFFMAN

COMPACT®

Pendant Arm Series 2 Couplings
Système de suspension série 2 Accouplements
Sistema de suspensión 2 Unión-acoplamientos



901.2290.000

Rev. F © 2018 Hoffman Enclosures Inc.

PH 763 422 2211 • nVent.com/HOFFMAN

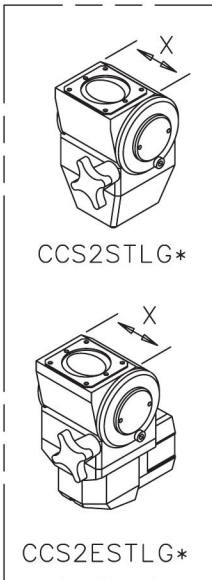
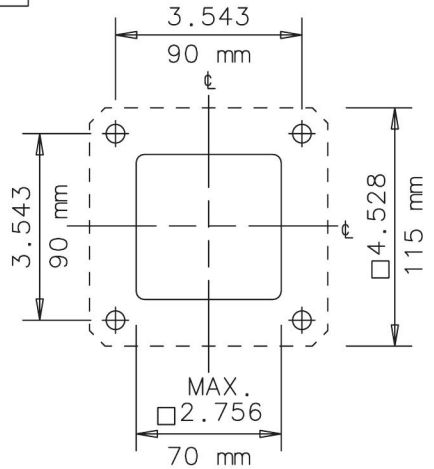
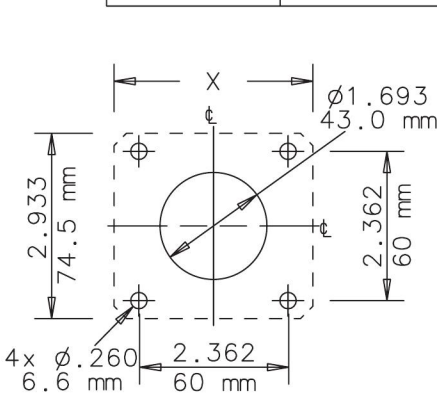
P/N 87928565

87928569



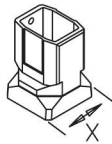
RSPSupply - 1-888-532-2706 - <https://www.RSPSupply.com>
See the product details here

| | | |
|-------------------------------|---------------------------|-------------|
| X | | |
| $\frac{3.150}{80 \text{ mm}}$ | CCS2FCLG CCS2FECLG | CCS2RBBLG |
| $\frac{3.228}{82 \text{ mm}}$ | CCS2FC15LG CCS2FEC15LG | CCS2RBB15LG |
| $\frac{3.622}{92 \text{ mm}}$ | CCS2STLG CCS2ESTLG | |

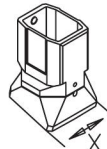


CCS2STLG*

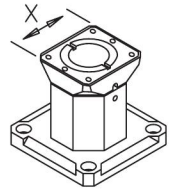
CCS2ESTLG*



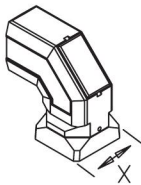
CCS2FCLG



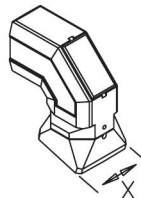
CCS2FC15LG



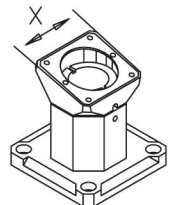
CCS2RBBLG



CCS2FECLG



CCS2FEC15LG

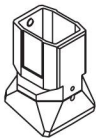
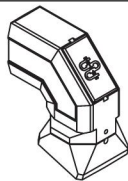
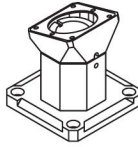


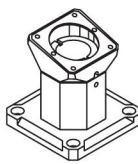


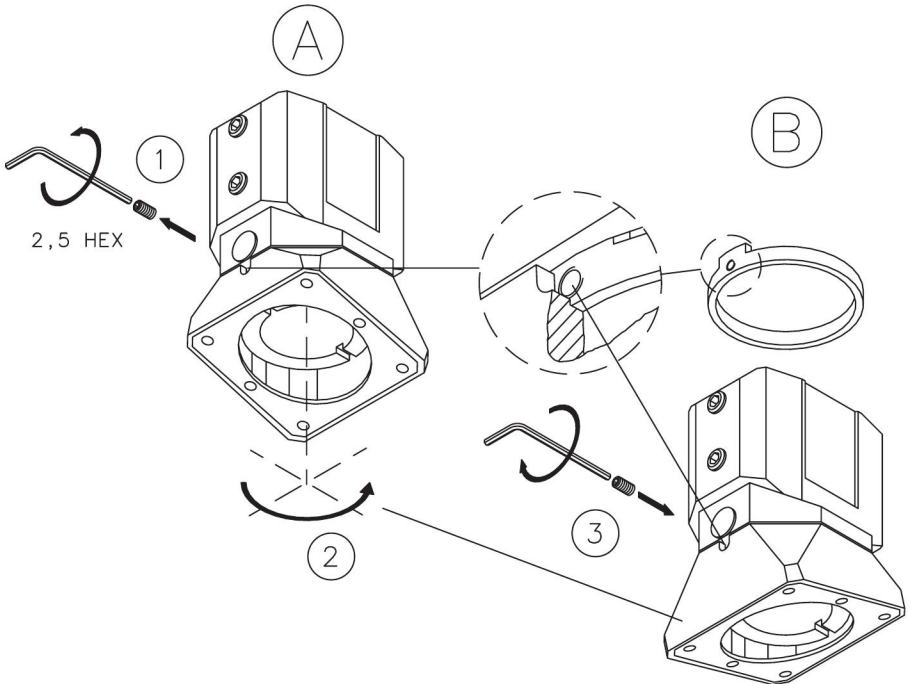
CCS2RBB15LG

* Maximum load 66 lbs/(30 Kg)
 Charge maximum 66 livres (30 kilogrammes)
 Carga máxima 66 libras (30 kilogramos)

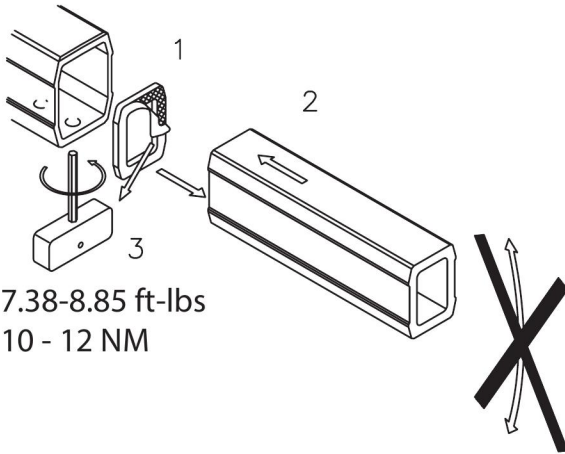
901.2290.000

Optional Base Rotation Rotation Facultative De Fond Rotación Opcional De la Escuadra base

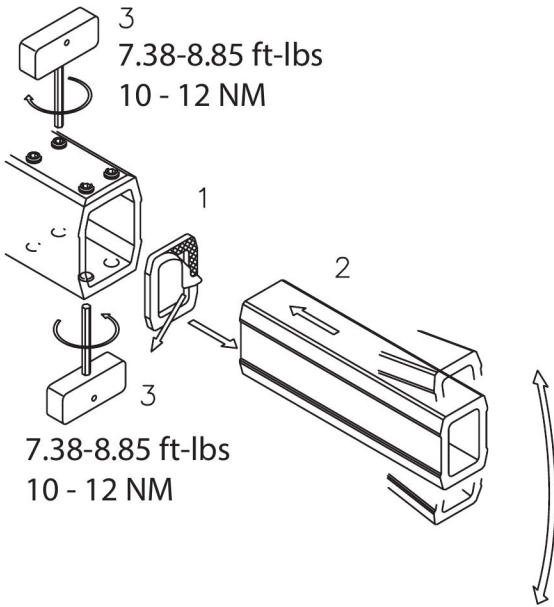
| | CCS2FC15LG | CCS2FEC15LG | CCS2RBB15LG |
|-----|---|---|---|
| (A) |  |  |  |
| (B) |  |  |  |



901.2290.000



7.38-8.85 ft-lbs
10 - 12 NM



7.38-8.85 ft-lbs
10 - 12 NM

7.38-8.85 ft-lbs
10 - 12 NM

